

These slides are for use with

Database Systems

Concepts, Languages and Architectures

Paolo Atzeni • Stefano Ceri • Stefano Paraboschi • Riccardo Torlone
© McGraw-Hill 1999



Concepts,
Languages
and
Architectures

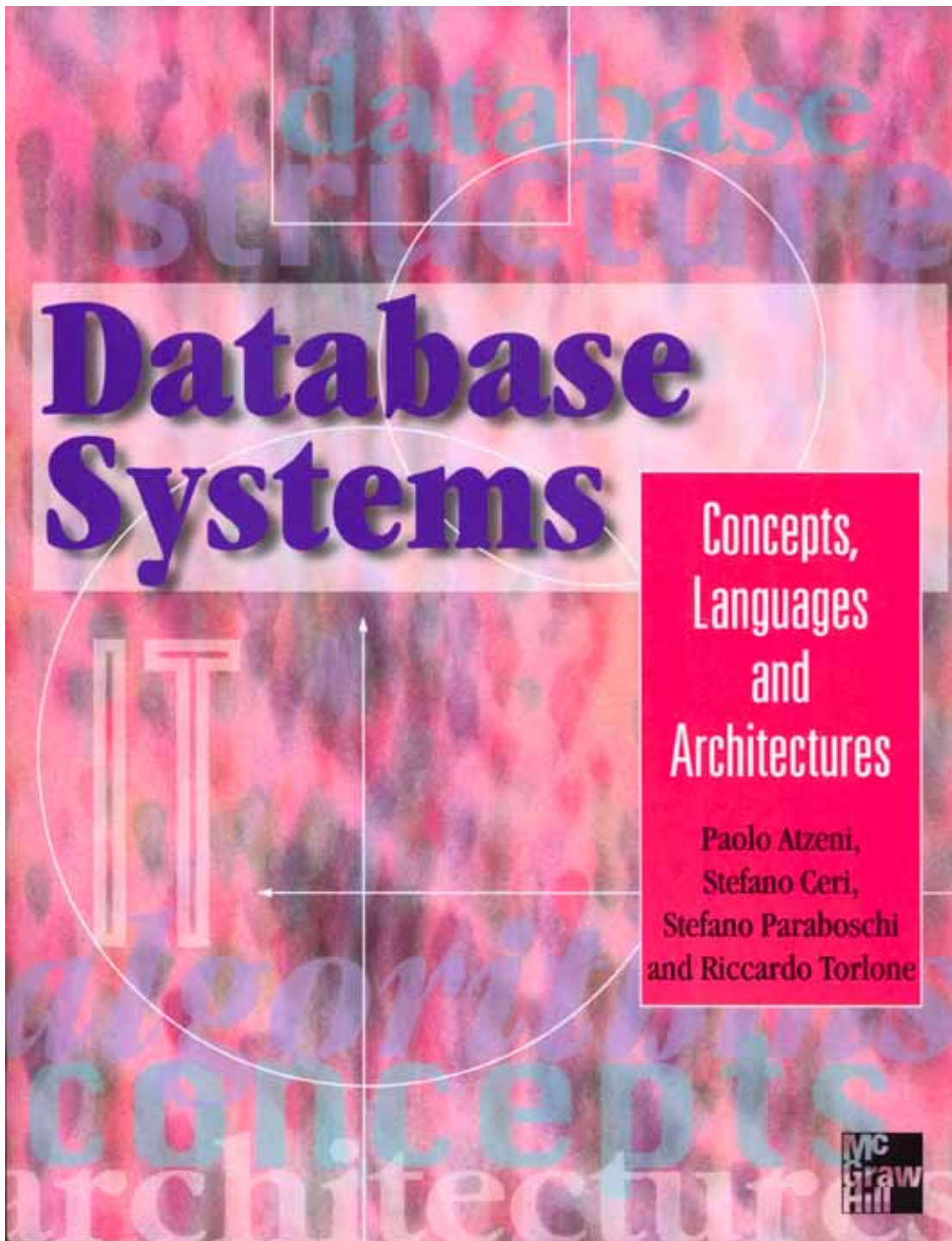
Paolo Atzeni,
Stefano Ceri,
Stefano Paraboschi
and Riccardo Torlone

Mc
Graw
Hill

To view these slides on-screen or with a projector use the arrow keys to move to the next or previous slide. The return or enter key will also take you to the next slide. Note you can press the 'escape' key to reveal the menu bar and then use the standard Acrobat controls — including the magnifying glass to zoom in on details.

To print these slides on acetates for projection use the escape key to reveal the menu and choose 'print' from the 'file' menu. If the slides are too large for your printer then select 'shrink to fit' in the print dialogue box.

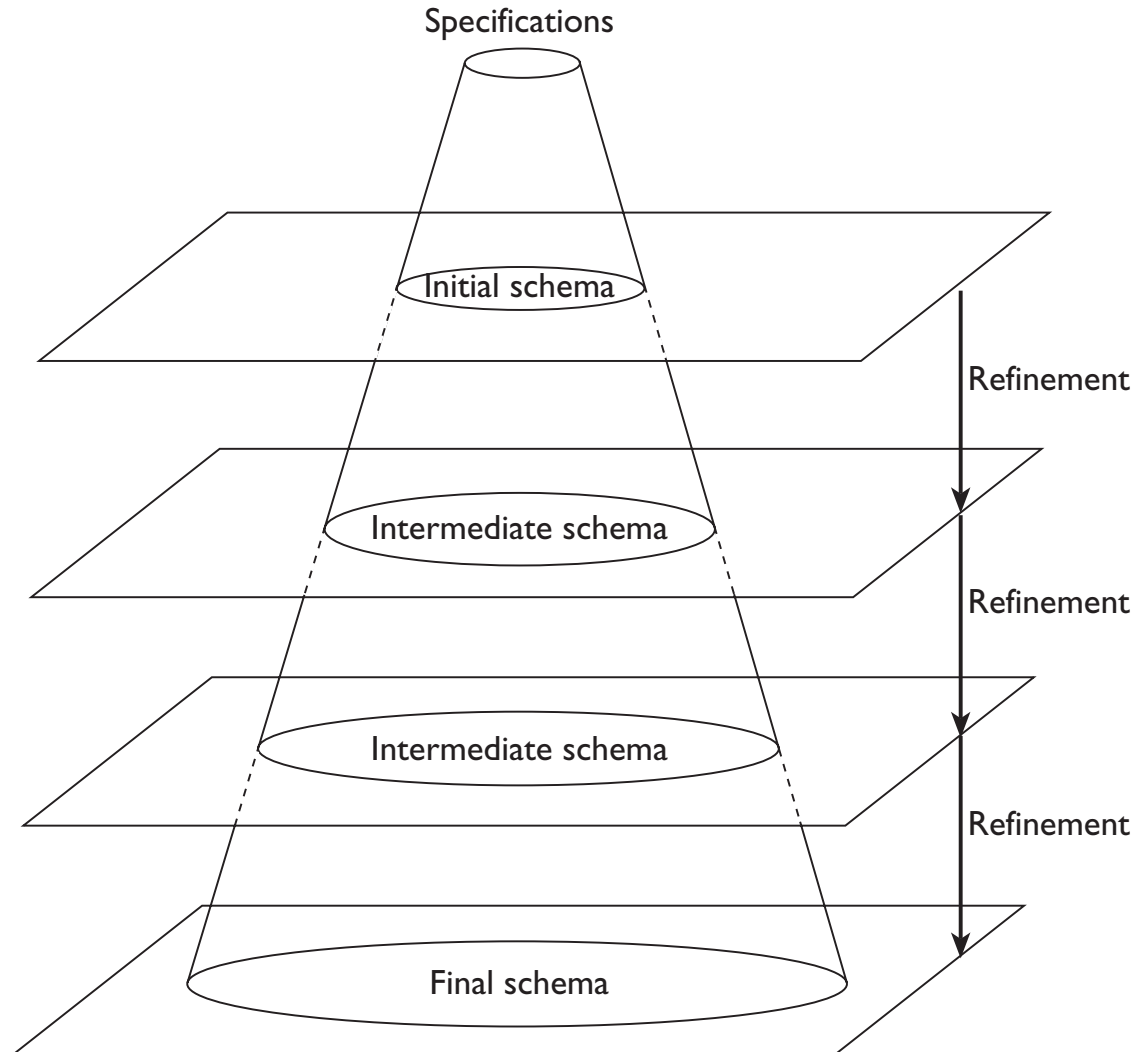
Press the 'return' or 'enter' key to continue . . .



Chapter 6

Conceptual design

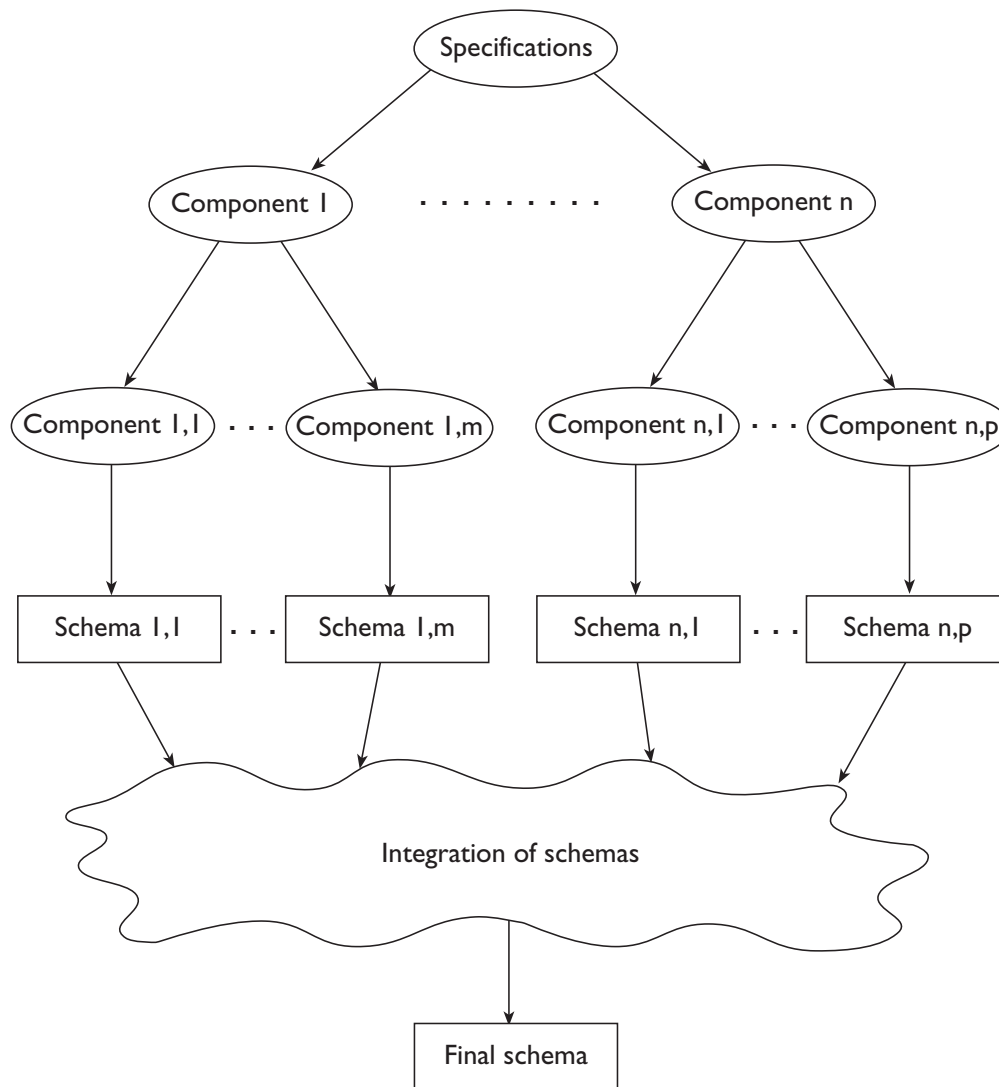
The top-down strategy



Top-down transformation primitives

Transformation	Initial concept	Result
T_1 From one entity to two entities and a relationship between them		
T_2 From one entity to a generalization		
T_3 From one relationship to multiple relationships		
T_4 From one relationship to an entity with relationships		
T_5 Adding attributes to an entity		
T_6 Adding attributes to a relationship		

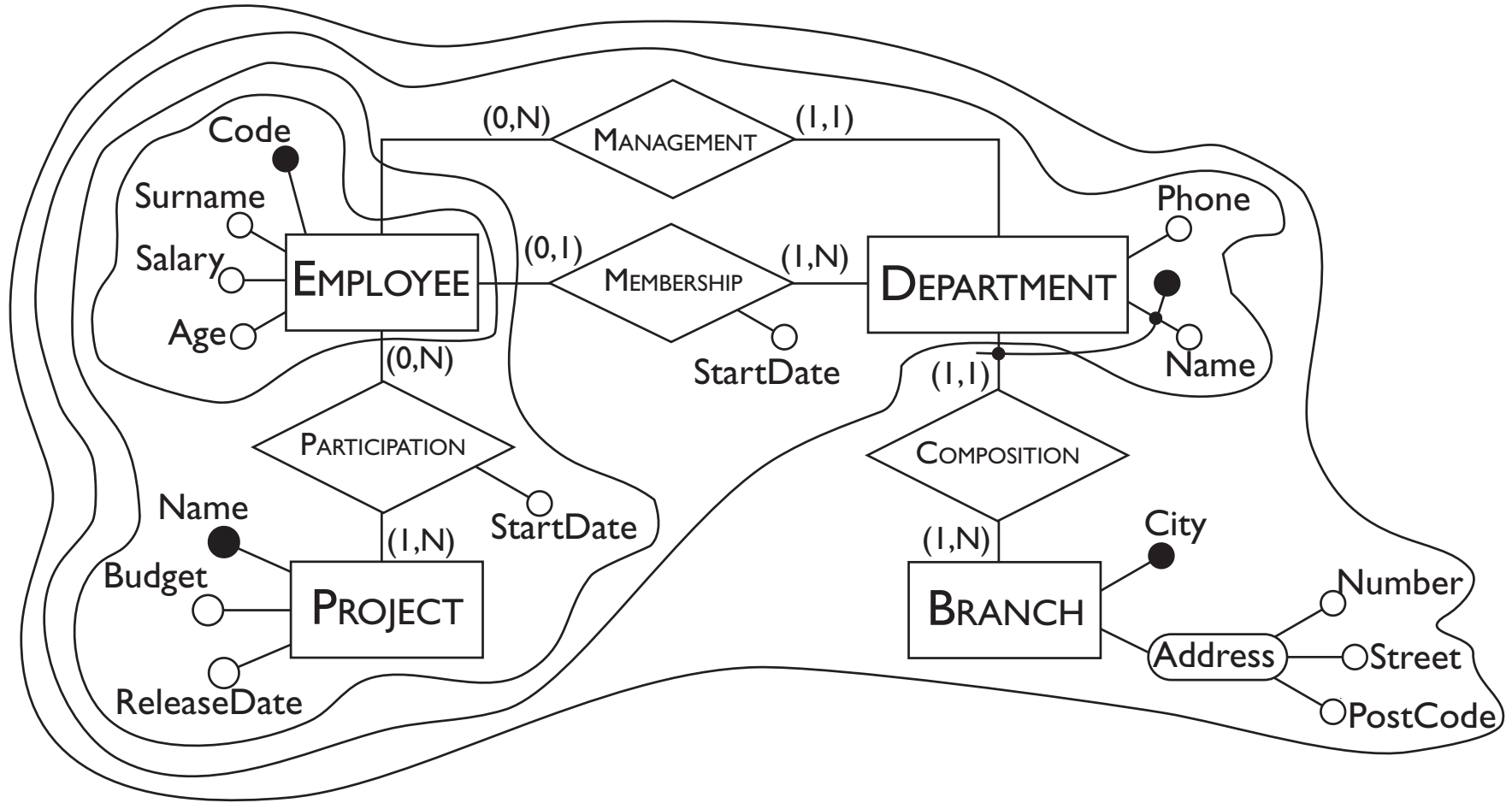
The bottom-up strategy



Bottom-up transformation primitives

Transformation	Initial concept	Result
T_1 Generation of an entity		
T_2 Generation of a relationship		
T_3 Generation of a generalization		
T_4 Aggregation of attributes on an entity		
T_5 Aggregation of attributes on a relationship		

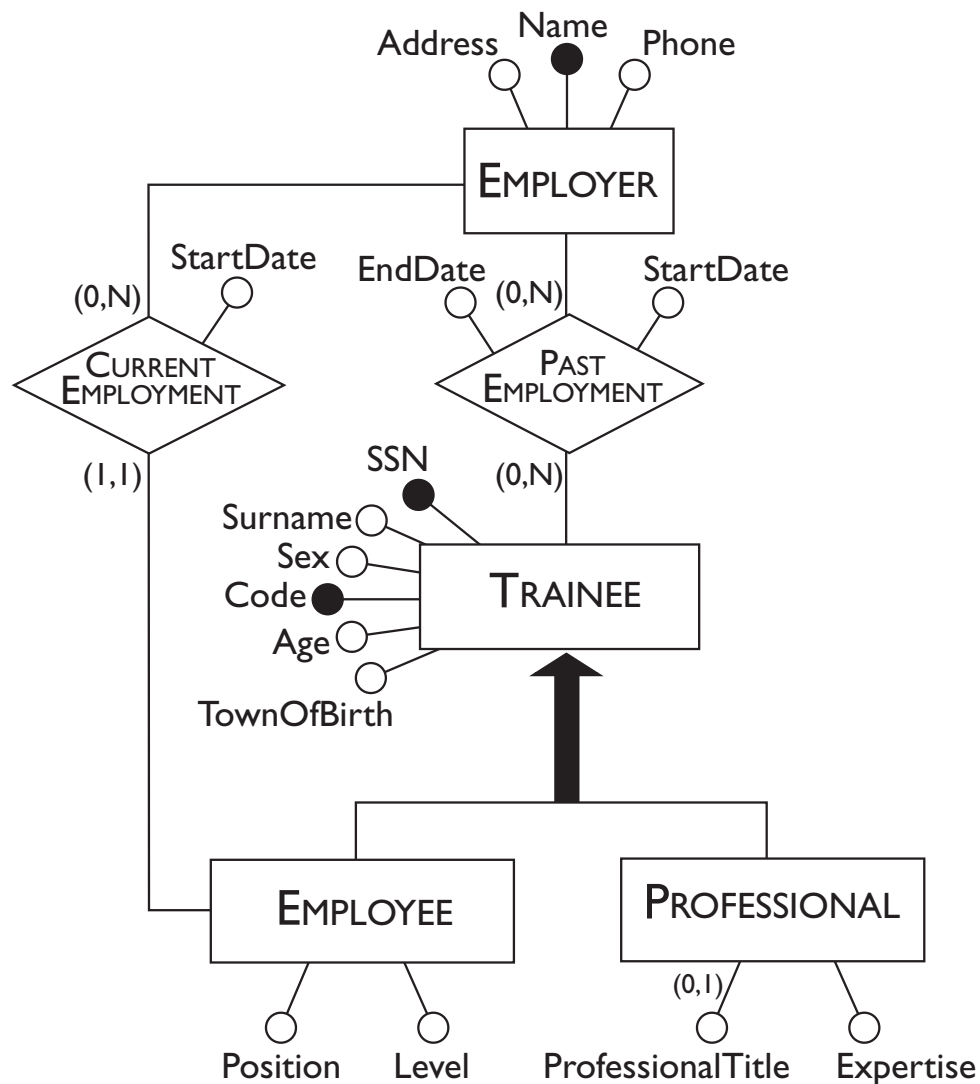
An example of the inside-out strategy



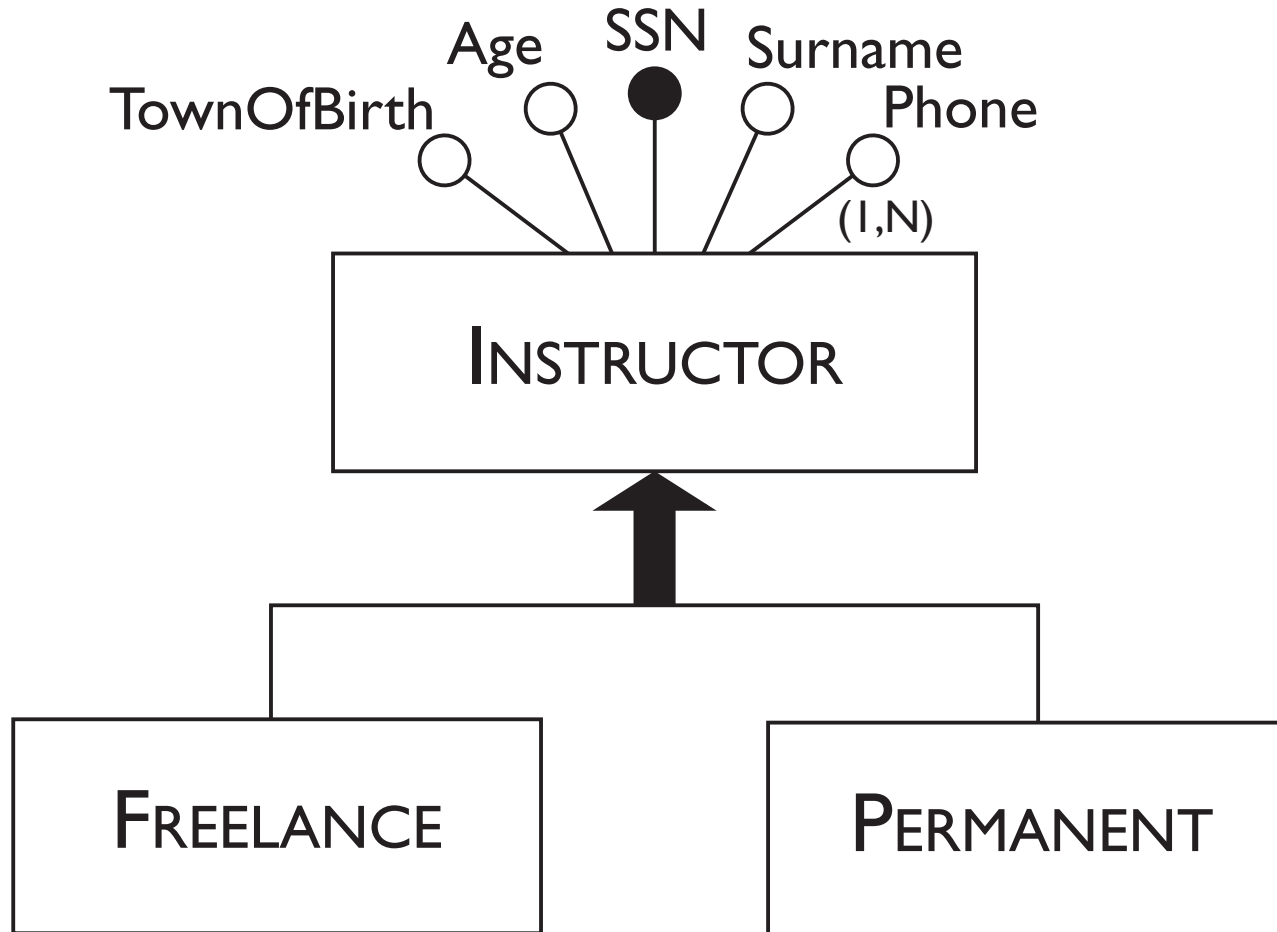
Skeleton schema for a training company



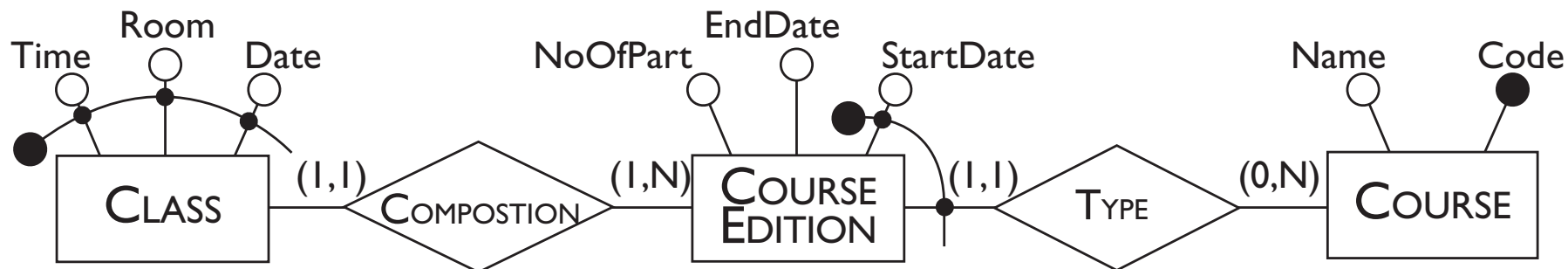
The refinement of a portion of the skeleton schema



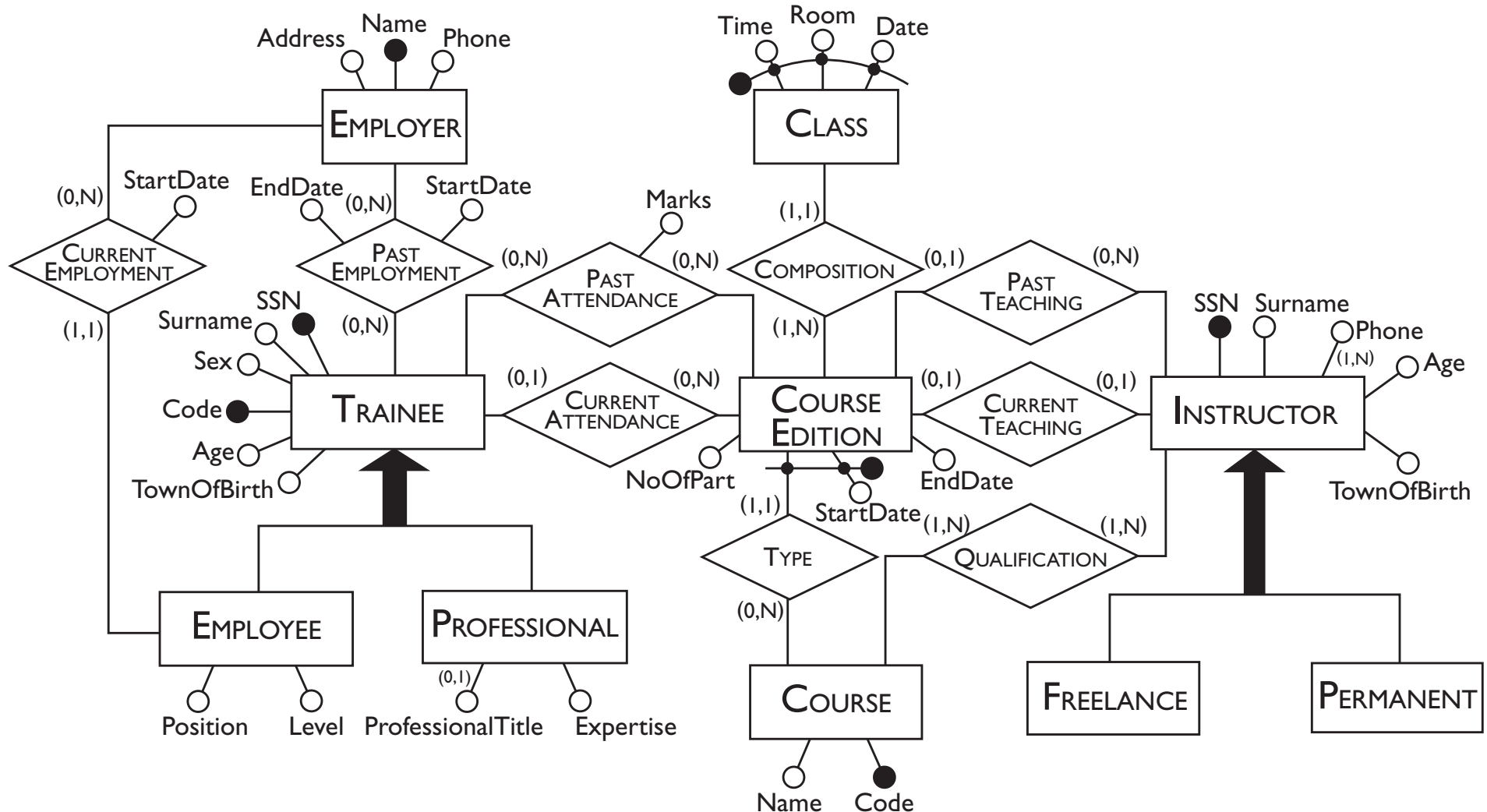
The refinement of another portion of the skeleton schema



The refinement of another portion of the skeleton schema



The final E-R schema for the training company



Conceptual design using a CASE tool

